



Manager's Meeting

Spring 2020 Season

South County Little League

March 1, 2020
Burke, Virginia





Content

- ▶ Welcome to 2020 Spring Season
- ▶ Organization
- ▶ Facilities and Fields
- ▶ Schedules
- ▶ Local Rules
- ▶ Health and Safety
- ▶ Upcoming Activities
- ▶ What You Need to Do
- ▶ Questions

Welcome to the 2020 Season Let's keep the Momentum Going



▶ Record Registration for 2020 - 430+ Players

- Baseball – 7 Divisions / 36 Teams
- Softball – 4 Divisions / 8 Teams

▶ 35% increase in 2 years + 110 Players

- Added 51 Players in 2019
- Added 62 Players in 2020

▶ It's No Accident – We decided to do this.

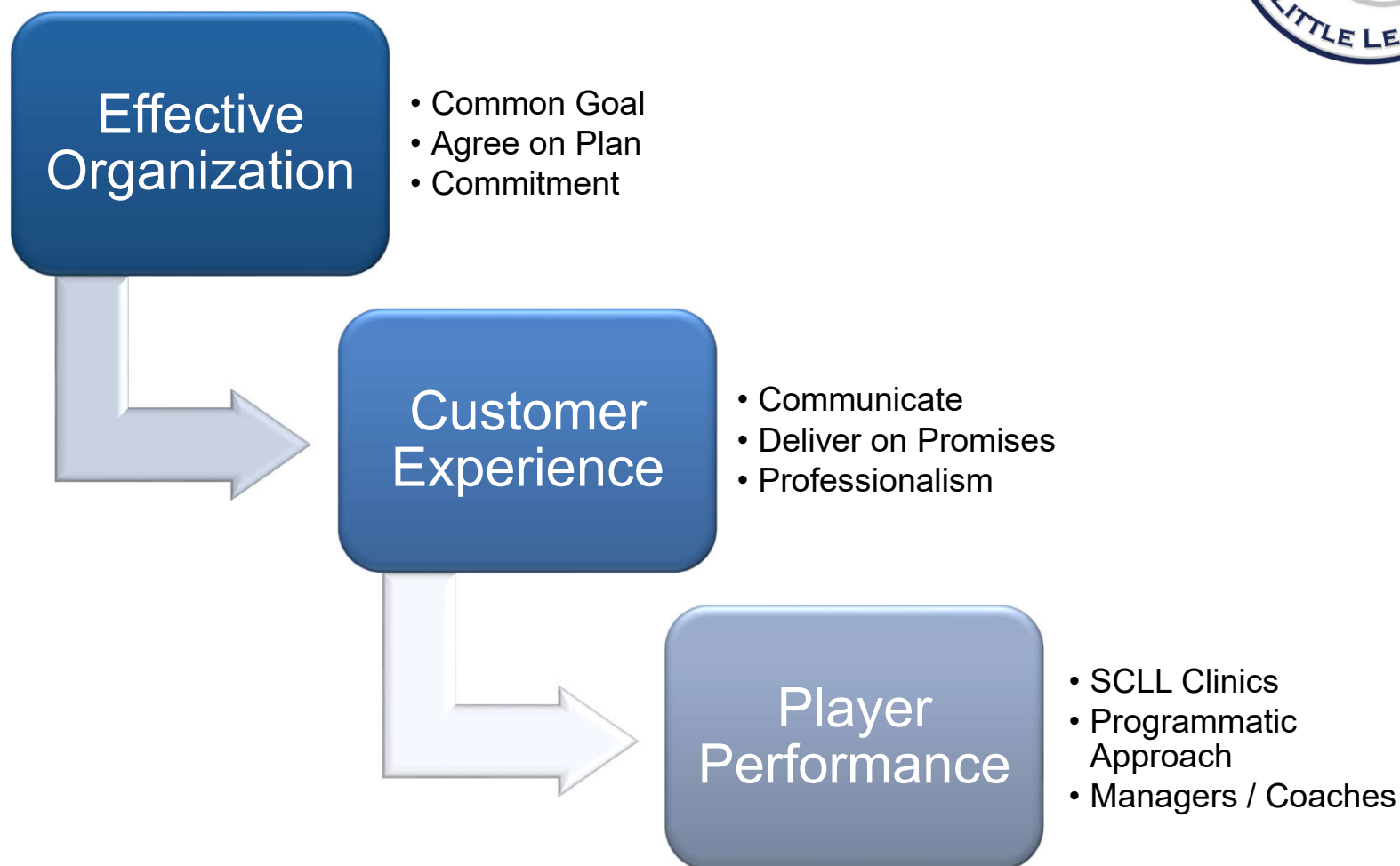
- Established a goal of 500 players for the League
- Executed plan to deliver high quality experience

▶ Managers are a major part of that experience



2020 – We are in Phase 3 of SC500

You are what will make the difference

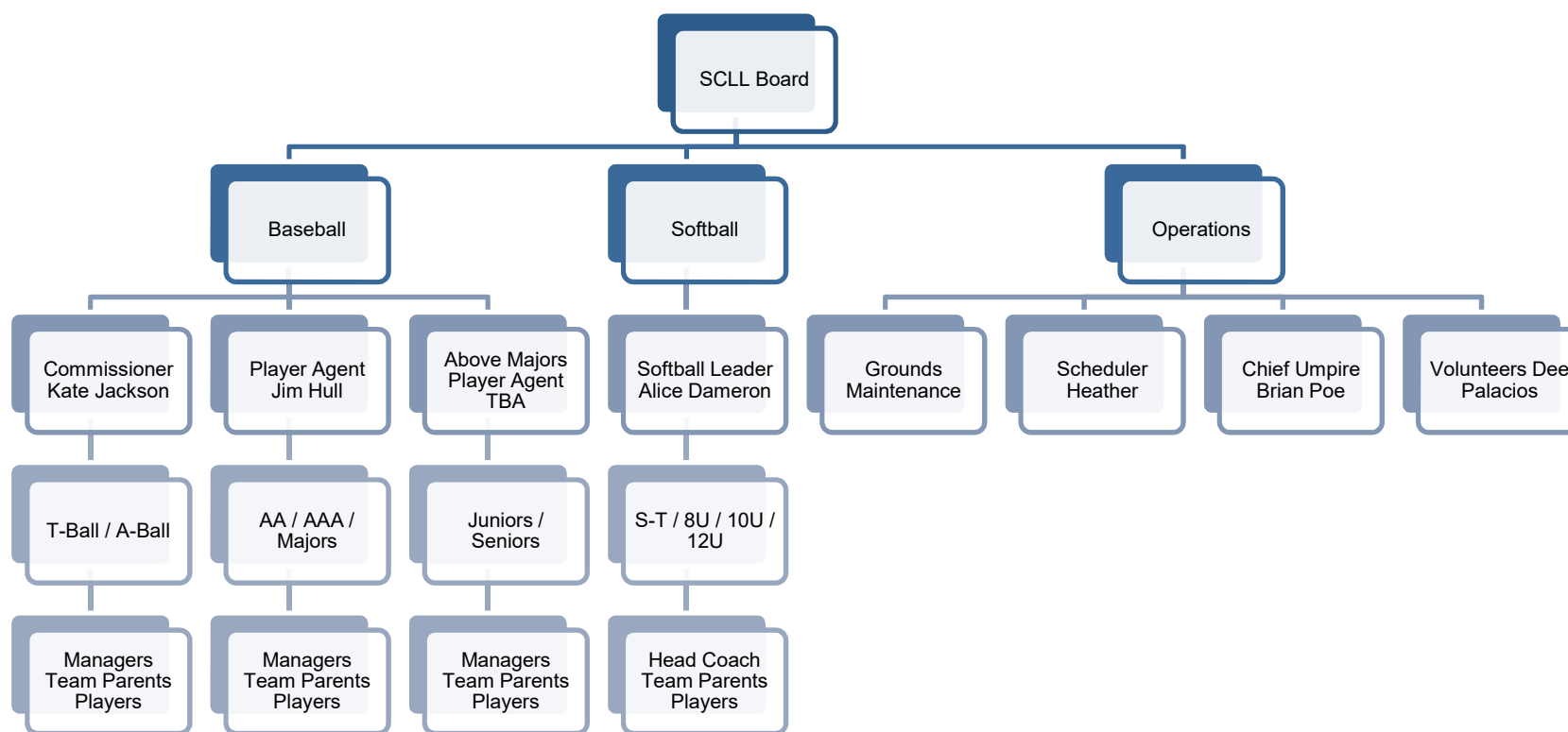




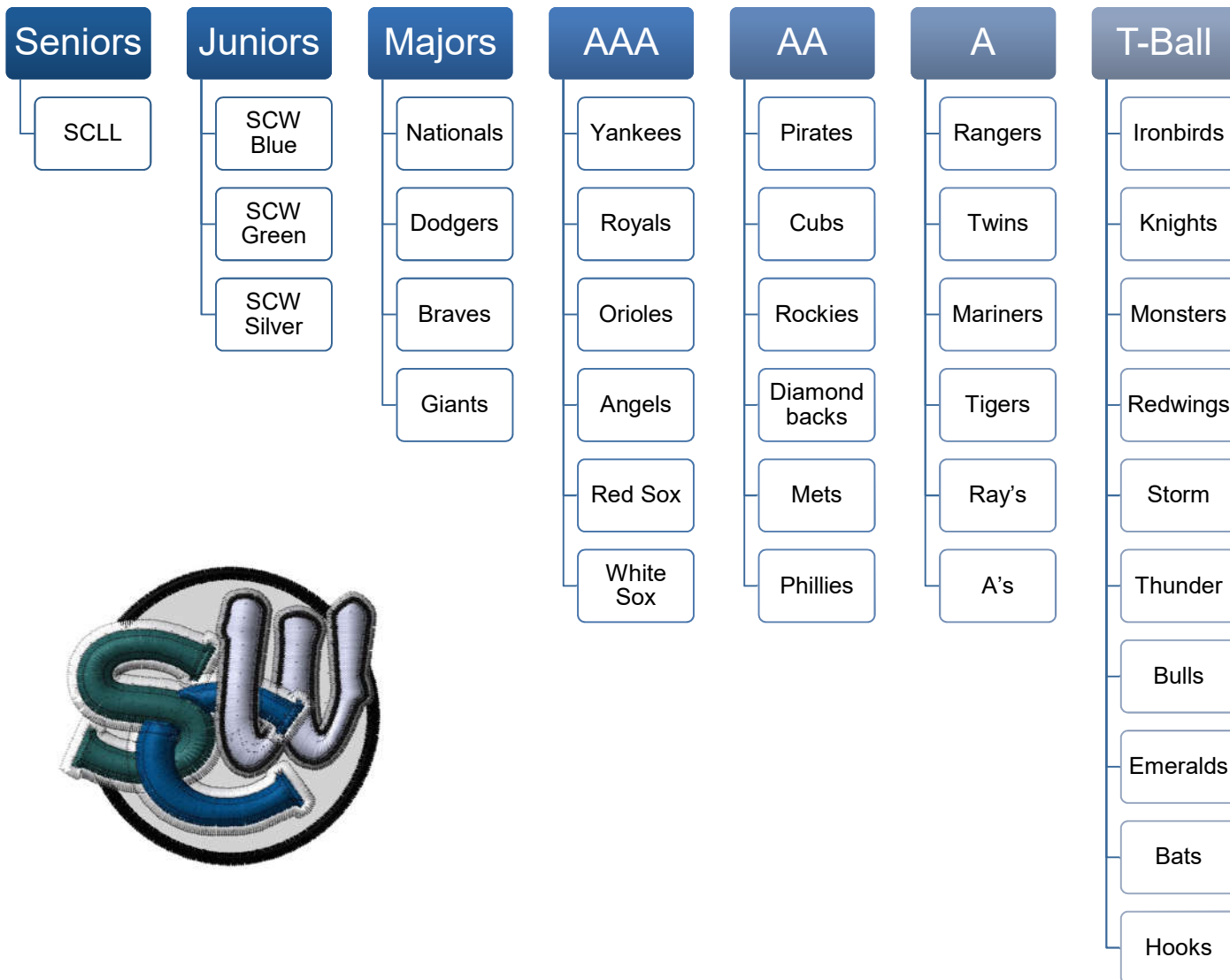
Content

- ▶ Welcome to 2020 Spring Season
- ▶ Organization
- ▶ Facilities and Fields
- ▶ Schedules
- ▶ Local Rules
- ▶ Health and Safety
- ▶ Upcoming Activities
- ▶ What You Need to Do
- ▶ Questions

Organization



2020 SCLL Baseball Teams





Content

- ▶ Welcome to 2020 Spring Season
- ▶ Organization
- ▶ Facilities and Fields
- ▶ Schedules
- ▶ Local Rules
- ▶ Health and Safety
- ▶ Upcoming Activities
- ▶ What You Need to Do
- ▶ Questions

Our Facility is the Best in District 9

We are constantly improving



3D Model View

With facilities located at Lower Potomac Park, SCLL is committed to providing the complete Little League experience for boys and girls, age 4 to 16 within our community. Our program stresses skill development to play the game with confidence while instilling teamwork and sportsmanship. SCLL families enjoy a team of dedicated volunteers, high quality facilities, and the chance to learn and play the game in an open family friendly environment.

It is our goal to improve our facilities with such features as field lighting, parking lighting, pedestrian and handicap access improvements, sun screens, as well as multiple other features to enhance the overall experience for players and families.

Please help SCLL realize its improvement goals!

WWW.SCLLVIA.ORG

Email: President@scvllva.org for more details

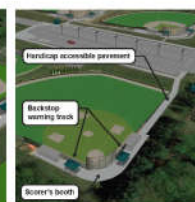
South County Little League is a 5010 Non-Profit. TAX ID 54-1362238



Batter's Eye / Plate Canopy



Parking Lot Improvements



Field 5 Access Improvements



Field Layouts



Field 1 & 2 Improvements

- ▶ Field upgrade 2019
 - LP4 / LP5
- ▶ Pitcher Bullpen 2019
- ▶ Outfield tubing 2019
- ▶ Tarps 2019
- ▶ Field upgrades 2020
 - LP1 / LP2 / LP5
- ▶ New Scoreboards
 - LP1 / LP2 / LP5
- ▶ LP5 outfield screen
- ▶ LP5 handicap access
- ▶ Parking lot striping
- ▶ Brick Memorial
- ▶ Storage shed repairs
- ▶ New storage container

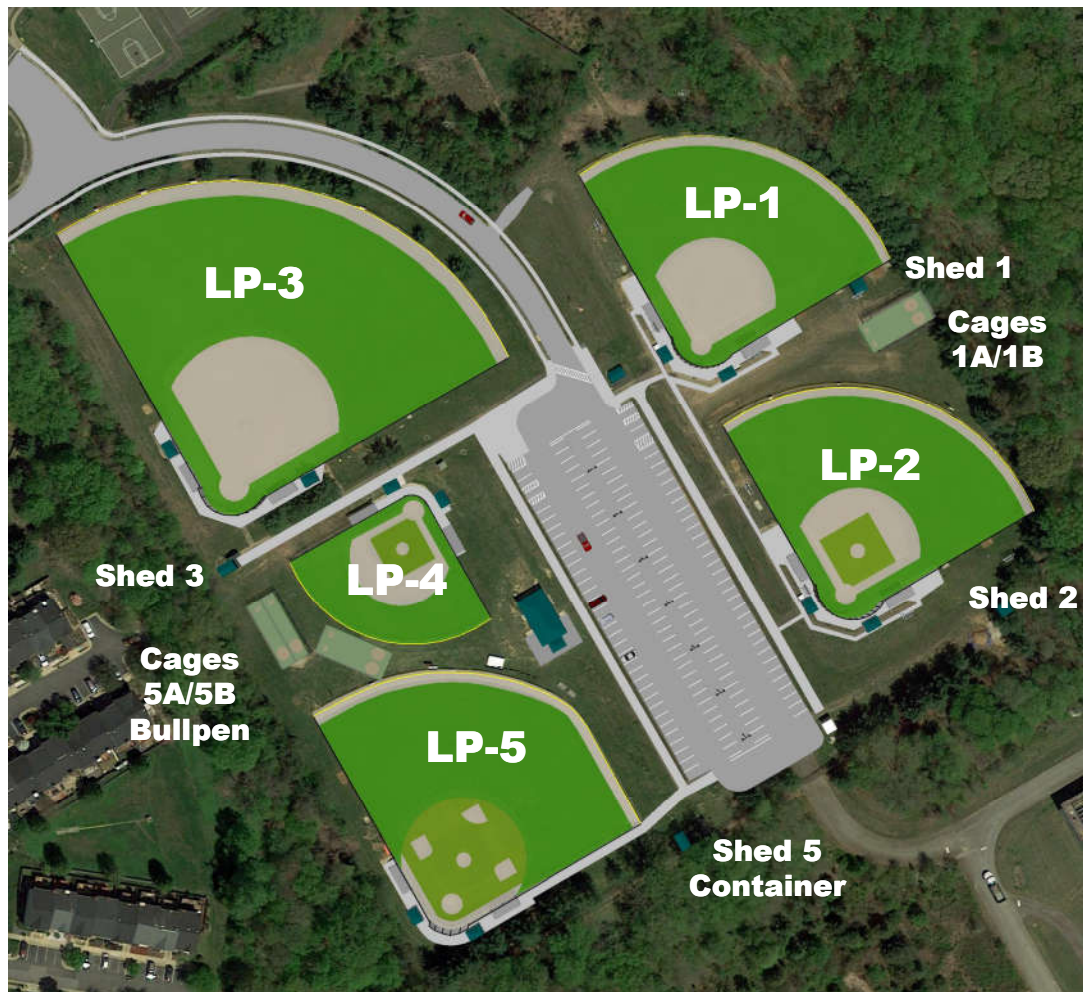
SOUTH COUNTY LITTLE LEAGUE FACILITY IMPROVEMENT GOALS

Lower Potomac Park
Lorton, Virginia



Facility / Field Information

Lower Potomac Park



- ▶ Fields
 - LP1 – A, AA, Softball
 - LP2 – AA, AAA
 - LP3 – Juniors / Seniors
 - LP4 – T-Ball, A, Softball
 - LP5 – Majors, AAA
- ▶ Batting Cages / Bullpen
 - Cages 1A/1B
 - Cages 5A/5B
 - Bullpen at Cage 5A/5B
- ▶ Storage Sheds
 - Sheds, 1, 2, 3, 5
 - Container – NEW
- ▶ Concessions Stand
- ▶ Equipment Storage
- ▶ Parking

Field Maintenance



Welcome to South County Little League

PRE-GAME / PRACTICE FIELD MAINTENANCE

- Check the field for hazards (insecure bases, holes in the ground / fencing).
- Repair minor issues, report major issues to the League Commissioner, Grey Hat of the Day or Field Maintenance Director.
- Remove tarps from LP5
- Drag / groom the skinned areas level and smooth.
- Rake, fill, and groom mound / batter box, as needed.
- Line the infield dirt. **DO NOT USE CHALK ON GRASS AREAS**

POST-GAME/PRACTICE FIELD MAINTENANCE

- Remove bases
- Drag the skinned areas only
- Rake loose dirt from the grass along the base paths, the mound circle, and infield edge back into the skinned areas.
- Rake, fill, and groom the field mound and home plate area.
- Rake, fill, and groom bull pen mounds.
- Replace and tamp loose divots in turf areas.
- Replace mound and home plate tarps and secure if necessary. (LP5)
- Sweep out the dugouts.
- Dispose of trash in and around the field, dugouts, and bleacher areas.

FIELD MAINTENANCE CHECKLISTS

BASE PATH MAINTENANCE

- Remove bases and debris (sticks, rocks, grass clippings)
- Drag the skinned areas—slowly. This grooms the surface and levels low spots. Keep the drag at least 6 inches from the grass edge to prevent LIPS forming.
- Groom the areas next to the turf with a landscape rake.

Tips & Hints

- Change the direction of the drag to prevent buildup; try a spiral drag path.
- If infield mix gets on the turf, use a plastic fan rake or broom to get it out.

Please Avoid

- Raking across the base path. This creates low spots in the middle of the base path and a lip along the grass.
- Raking or squeegeeing water out of the base path, going across to the grass, will quickly develop a LIP
- Entering and exiting the field at the same place with the drag.
- Dragging past the skinned area onto the turf will create lips.



HOME PLATE MAINTENANCE

- Rake loose material from the batter & catcher boxes and umpire area to expose hard ground.
- Tamp loose mix into the holes using a tarp or the smooth back of a field rake.
- Rake then repair areas and the rest of the home plate area.
- Cover with a tarp (LP5) to hold in moisture and protect the skinned area from heavy rains.

MOUND MAINTENANCE

- Rake and sweep loose material from the landing area and top of the mound exposing hard ground.
 - The landing area is the place where the pitcher lands with his lead foot.
- Rake the loose moistened material into the holes created by the pitcher.
- Tamp the loose fill using a tarp or the smooth back of a field rake.
- Rake and broom the repaired areas and the rest of the mound.
- Cover with a tarp (LP 5) to hold in moisture and protect the skinned area from heavy rains.

MOUND DIMENSIONS

- **60' FIELD** / The pitching block sits 6" above home plate with the front 46" from the back apex of home plate. The top of the mound is level in a 17" (deep) x 48" (wide) box measuring 17" from 4" in front of the pitching block rearwards and centering the 48" width on the pitching block.
- **90' FIELD** / The pitching block sits 10" above home plate with the front 60' 6" from the back apex of home plate. The top of the mound is level in a 34" (deep) x 60" (wide) box measuring 34" from 6" in front of the pitching block rearwards and centering the 60" width on the pitching block.
- The grade for the front of the mound drops 1" for every linear foot starting 4" in front of the block (60' field) and 6" in the front of the block (90' field).

FIELD MAINTENANCE TIPS

LP5 TARPS

- Once removed from the field, hang tarps along the fence line.
- Place tarps on the Mound and Home Plate area after every practice or game unless the field is to be used immediately following.

LP1/LP2 TARPS

- A crew of at least 4 adults is necessary to handle the LP1/LP2 full infield tarps
- Unroll the tarp onto the outfield
- Unfold the tarp in the outfield
- "Fly" the tarp by getting some air under it, and pull over the infield (silver side faces the sky)
- Hold in place with sandbags or stakes.
- When removing the tarp, turn upside down by pulling from one end over the infield and pull all the way to outfield
- Fold tarp longitudinal to roller
- Roll onto roller toward fence, and place cover over the tarp.

DRYING AGENT

- Need permission from Grounds Director to use.
- Use drying agents sparingly and only for games; overuse can adversely affect the playing surface.
- Apply drying agent an hour or more before game time so it will have time to work.

Practice Facilities

FFX County allocated 8 more nights than 2019



Lower Potomac

Halley ES

Newington
Forest ES

Laurel Hill ES

Gunston ES

Laurel Hill Park



Content

- ▶ Welcome to 2020 Spring Season
- ▶ Organization
- ▶ Facilities and Fields
- ▶ Schedules
- ▶ Local Rules
- ▶ Health and Safety
- ▶ Upcoming Activities
- ▶ What You Need to Do
- ▶ Questions

Schedules



- ▶ **Pre-Opening Day**
 - Starting week of March 8
 - 2 Practices per week per team
 - Prioritization / field-sharing in some divisions
- ▶ **Pre-Spring Break – Special Week**
- ▶ **Spring Break Week**
 - No Games April 4 through April 12
 - Feel free to schedule practice – request from scheduler
- ▶ **Post-Spring Break**
 - Rotating schedule up to Memorial Day Weekend
 - No games Memorial Day Weekend
 - Tournament after Memorial Day (AA/AAA/Majors)
- ▶ **Schedule Planning**
 - T-Ball (1 practice per week / 1 game on Saturday)
 - Single A (Alternate weekly practice/games 1:2 and 2:1)
 - AA / AAA / Majors (Field practice + batting / 2 games/week)
 - Juniors – Master D9 Scheduler – Weeknight / Saturday
 - Seniors – Master D9 Scheduler – Double Headers Saturday
- ▶ **Interleague Games for Seniors / Juniors / Majors**



Pre-Opening Day Weekdays Practices



PRELIMINARY DRAFT

March 19 - March 27

<u>Field Name</u>	<u>Monday</u>	<u>Tuesday</u>	<u>Wednesday</u>	<u>Thursday</u>	<u>Friday</u>
Lower Potomac Field 1	AA Rockies/Cubs	AA Phillies/Pirates	AA Diamondbacks/Mets	12U Softball	Single A Twins (Anthony M)
Lower Potomac Field 2	AAA Angles (Craig M)	AAA Orioles (Casey B)	AAA Red Sox (Brad C)	AAA Royals (James C)	AAA White Sox (Michael D)
Lower Potomac Field 3		Juniors Team 1	Juniors Team 2	Juniors Team 3	Seniors Team (Brian Magaha)
Lower Potomac Field 4	Single A - A's (John S)	Single A Mariners (Nathan B)	Single A Rays (Adam T)	Single A Rangers (Ryan M)	Single A Tigers (Jason S)
Lower Potomac Field 5	Majors Dodgers (Brian K)	Majors Giants (Micheal H)	Majors Nats (Brian M)	Majors Braves (Nate)	AAA Yankees (Ben F)
Halley ES Field 2 (6-7p)	Tball Bats	Tball Emeralds	Tball Ironbirds	Tball Monsters	Tball Storm
Laurel Hill ES Field 1			Softball		
Newington Forest Field 1 (6-7p)	Tball Bulls	Tball Hooks	Tball Knights	Tball Red Wings	Tball Thunder
Gunston ES Field 1	Softball				Softball

LP BC1A	AA Cubs/Rockies	AA Pirates/Phillies	AA Mets/Diamondbacks	Sofball 12U	
LP BC1B	AAA Angles (Craig M)	AAA Orioles (Casey B)	AAA Red Sox (Brad C)	AAA Royals (James C)	AAA White Sox (Michael D)
LP BC5A	Majors Dodgers (Brian K)	Majors Giants (Mike H)	Majors Nats (Brian M)	Majors Braves (Nate)	AAA Yankees (Ben F)
LP BC 5B		Juniors Team 1	Juniors Team 2	Juniors Team 3	Seniors Team (Brian Magaha)

Pre-Opening Day – Saturdays Practices



PRELIMINARY DRAFT

	900	930	1000	1030	1100	1130	1200	1230	100	130	200	230	300	330	400	430	500	530	600	630
LP1	AA Cubs		AA Rockies		AA Phillies		AA Pirates		AA Diamondbacks		AA Mets									
LP2	AAA Angles		AAA Orioles		AAA Red Sox		AAA Royals		AAA White Sox		AAA Yankees									
LP3	Juniors Team 1		Juniors Team 2		Juniors Team 3		Seniors													
LP4	Tball Practice Time Window		Single A - A's		Single A Mariners		Single A Rays		Single A Rangers		Single A Twins		Single A Tigers							
LP5	Majors Dodgers		Majors Giants		Majors Nationals		Majors Braves													

	9a	930a	10a	1030a	11a	1130a	12p	1230p	1p	130p	2p	230p	3p	330p	4p	430p	5p	530p	6p	630p
BC 1A	AA Cubs		AA Rockies		AA Phillies		AA Pirates		AA Diamondbacks		AA Mets									
BC 1B	AAA Angles		AAA Orioles		AAA Red Sox		AAA Royals		AAA White Sox		AAA Yankees									
BC 5A	Juniors Team 1		Juniors Team 2		Juniors Team 3		Seniors													
BC 5B	Majors Dodgers		Majors Giants		Majors Nationals		Majors Braves													

Opening Day Games Schedule

Field turnover will be tight



PRELIMINARY DRAFT

LP1		LP2	LP3	LP4	LP5		
1000	Single A A's @ Twins 1Hr 45Min 15 min buffer	AAA Angels@Yankees 2Hr game 30min buffer	Juniors TBD	TBALL Bats@Bulls	AAA Orioles@Wht Sox 2Hr game 15min buffer		
1015				15 min buffer			
1030				TBALL Emeralds@Hooks			
1045				15 min buffer			
1100				TBALL Ironbirds@Knights			
1115	Single A Mariners@Tigers 1Hr 45Min 15 min buffer	AA Dbacks@Rockies 1Hr 45Min 30min buffer	Juniors TBD	15 min buffer	Majors Dodgers@Natioals 2Hr game 15min buffer		
1130				TBALL Monsters@Red Wings			
1145				15 min buffer			
1200				TBALL Storm@Thunder			
1215				15 min buffer			
1230	Single A Rays @ Rangers 1Hr 45Min 15 min buffer	AA Mets@Pirates 1Hr 45Min 30min buffer	Seniors TBD	Softball Field Space 415 - Dark	AAA Red Sox@Royals 2Hr game 15min buffer		
1245							
1300							
1315							
1330							
1345	Softball Field Space 4:00-Dark						
200							
215							
230							
245							
300							
315							
330							
345							
400							
415							
430							
445							
500							
515							
530							
545							
600							
615							
630							
645							
700							
715							
730							
745							
800							



Post-Opening Day – Special Week

Pre-Spring Break



PRELIMINARY DRAFT

April 3 SPECIAL WEEK

Field Name	Monday	Tuesday	Wednesday	Thursday	Friday
Lower Potomac Field 1	AAA Prac Yankees/Orioles	AAA Yankees@Orioles	AA Rockies@Mets	AA Pirates@Cubs	
Lower Potomac Field 2	AAA Prac Royals/Angels	AAA Royals@Angels	AAA White Sox@Red Sox	AA Phillies@Diamondbacks	
Lower Potomac Field 3	Maj Prac Nats/Giants	Jrs Team 1	Jrs Team 2	Jrs Team 3	Seniors Team
Lower Potomac Field 4	Single A Prac Twin/Mar (w/mach)	Single A Twins@Mariners	Single A Tigers@Rays	Single A Rangers@A's	
Lower Potomac Field 5	Maj Prac Braves/Dodgers	Major Braves@Dodgers	Major Nationals@Giants		
Halley ES Field 2	AA Prac Rockies/Mets	AA Prac Pirates/Cubs	Tball Bats/Emeralds Spit	Tball Ironbirds/Monsters Split	Tball Storm/Thunder Split
Laurel Hill ES Field 1					
Newington Forest Field 1	AAA Prac White Sox/Red Sox	AA Prac Phillies/Dbacks	Single A Prac Rang/A's (no mach)	Tball Red Wings/Bulls Split	Tball Hooks/Knights Split
Gunston ES Field 1	Single A Prac Tig/Rays (no mach)				
Laurel Hill Park Field 1	Softball	Softball	Softball	Softball	Softball

LP BC1A	AAA Prac Yankees/Orioles	Opt Single A Tig/Ray w/mach	AA Pirates		
LP BC1B	AAA Prac Royals/Angels	Opt Single A Rang/As w/mach	AA Cubs		
LP BC5A	Maj Prac Braves/Dodgers	AAA Prac White/Red Sox	AA Phillies		
LP BC 5B	Maj Prac Nats/Giants	AA Prac Rockies/Mets	AA Dbacks		

Post Spring Break Schedule Week 1 Rotation



PRELIMINARY DRAFT

<u>Field Name</u>	<u>Monday</u>	<u>Tuesday</u>	<u>Wednesday</u>	<u>Thursday</u>	<u>Friday</u>
Lower Potomac Field 1	AAA Prac 2 Team Split Field/Cage	AAA Game	AA Game	AA Game	AA Fields 2 teams split 45min (Opt)
Lower Potomac Field 2	AAA Prac 2 Team Split Field/Cage	AAA Game	AAA Game	AA Game	AAA Prac 2 Team Split Field/Cage
Lower Potomac Field 3	Maj Prac T1	Jrs Team 1	Jrs Team 2	Jrs Team 3	Seniors Team
Lower Potomac Field 4	AA Prac 2 Teams (1 hr each)	Single A Prac T1/T2 (1 hr each)	Single A Prac T3/T4 (1 hr each)	Single A Prac T5/T6 (1 hr each)	
Lower Potomac Field 5	Maj Prac T3	Major Game	Major Game	Maj Prac T4	Maj Prac T2
Halley ES Field 2	AA Prac 2 Teams (1 hr each)	Tball Bats/Emeralds (1hr each)		Tball Ironbirds/Monsters (1hr each)	Tball Storm/Thunder (1hr each)
Laurel Hill ES Field 1					
Newington Forest Field 1	AA Prac 2 Teams (1 hr each)			Tball Red Wings/Bulls (1hr each)	Tball Hooks/Knights (1hr each)
Gunston ES Field 1					
Laurel Hill Park Field 1	Softball	Softball	Softball	Softball	Softball

LP BC1A	AAA Prac 2 Team Split Field/Cage	AA Prac Wed Game (1hr each)	AA Prac Thurs Game (1hr each)		AA Cages 2 teams split 45min (Opt)
LP BC1B	AAA Prac 2 Team Split Field/Cage	AAA Prac Wed Game	AA Prac Thurs Game (1hr each)		AAA Prac 2 Team Split Field/Cage
LP BC5A	Maj Prac T1 (715 pregame batting)	Maj Prac Wed Game		Maj Prac T4	Maj Prac T2
LP BC 5B	Maj Prac T3 (715 pregame batting)	Jrs Pract	Jrs Prac	Jrs Prac	Seniors Team

Post Spring Break Schedule Week 2 Rotation



PRELIMINARY DRAFT

Field Name	Monday	Tuesday	Wednesday	Thursday	Friday
Lower Potomac Field 1	AAA Prac 2 Team Split Field/Cage	AAA Game	AA Game	AA Game	AA Fields 2 teams split 45min (Opt)
Lower Potomac Field 2	AAA Prac 2 Team Split Field/Cage	AAA Game	AAA Game	AA Game	AAA Prac 2 Team Split Field/Cage
Lower Potomac Field 3	Maj Prac T1	Jrs Team 1	Jrs Team 2	Jrs Team 3	Seniors Team
Lower Potomac Field 4	Single A 3 Team split (50 min ea)	Single A Game	Single A Game	Single A Game	Single A 3 Team split (50 min ea)
Lower Potomac Field 5	Maj Prac T3	Major Game	Major Game	Maj Prac T4	Maj Prac T2
Halley ES Field 2	AA Prac 2 Teams (1 hr each)	Tball Bats/Emeralds Spit (1hr ea)		Tball Ironbirds/Monsters Split (1hr ea)	Tball Storm/Thunder Split (1hr ea)
Laurel Hill ES Field 1					
Newington Forest Field 1	AA Prac 2 Teams (1 hr each)			Tball Red Wings/Bulls Split (1hr ea)	Tball Hooks/Knights Split (1hr ea)
Gunston ES Field 1	AA Prac 2 Teams (1 hr each)				
Laurel Hill Park Field 1	Softball	Softball	Softball	Softball	Softball

LP BC1A	AAA Prac 2 Team Split Field/Cage	AA Prac Wed Game (1hr each)	AA Prac Thurs Game (1hr each)		AA Cages 2 teams split 45min (Opt)
LP BC1B	AAA Prac 2 Team Split Field/Cage	AAA Prac Wed Game	AA Prac Thurs Game (1hr each)		AAA Prac 2 Team Split Field/Cage
LP BC5A	Maj Prac T1 (715 pregame batting)	Maj Prac Wed Game		Maj Prac T4	Maj Prac T2
LP BC 5B	Maj Prac T3 (715 pregame batting)	Jrs Team 1	Jrs Team 2	Jrs Team 3	Seniors Team



Content

- ▶ Welcome to 2020 Spring Season
- ▶ Organization
- ▶ Facilities and Fields
- ▶ Schedules
- ▶ Local Rules
- ▶ Health and Safety
- ▶ Upcoming Activities
- ▶ What You Need to Do
- ▶ Questions

Local Rules



SCLL 2020 Local Rules Summary

	Majors	AAA	AA	A	T-Ball
Age Guidelines	10-12	9-11	7-9	6-8	4-6
Keep Standings	Yes	Yes	Yes	No	No
Keep Score	Yes	Yes	Yes	Yes	No
Ball Delivery	Player	Player	Player (with Coach pitch)	Machine Pitch	Tee/Soft toss optional
Batting Order	Continuous	Continuous	Continuous	Continuous	Continuous
Counting outs	Yes	Yes	Yes	Yes	No
Strike Outs	3 (drop 3 rd strike rule in effect)	3	3 (Combo player/coach pitch)	3 (Very small strike zone)	No
Walk	Yes	Yes	No	No	NA
Infield innings/ player	0	1	1	2	1
Defensive innings per player	3 of first 5 innings	3 of first 5 innings	No one sits twice until everyone sits once	No one sits twice until everyone sits once	All play
% of team pitching	No requirement	At least 50% must pitch 100 pitches/season	At least 50% must pitch 100 pitches/season	N/A	N/A
Max innings/ position - non pitching	None	4	3	N/A	2
Max inning pitching	None	None	3	N/A	N/A
Max runs/inning	None	5	4	3	None
Max runs last inning	None	10	8	6	None
Bunt	Yes (if show, can't swing)	Yes (if show, can't swing)	Yes (if show, can't swing)	No	No
Steal	After ball crosses plate	After ball crosses plate	1 base/at bat, cannot steal home on wild pitch or passed ball	No	No
Maximum Run Rule	10 runs after 4 innings	10 runs after 4 innings	10 runs after 4 innings	No	No
LL Mercy Rule	15 runs after 3 innings	15 runs after 3 innings	N/A	N/A	N/A
Post Season Play	Yes	Yes	Yes	No	No



Umpires



- ▶ **Umpires are only required at certain divisions**
 - Seniors / Juniors – 2 Adults
 - Majors / AAA – Adult / Teen
 - AA – Teens
 - *No Umpires for Single A or T-Ball*
- ▶ **Each Team must identify an adult as an umpire**
 - Umpires “Sign-Up” for games
 - Cannot guarantee umpires for every game
 - Higher level games take priority
 - 2019 – SCLL had better than 95% coverage
- ▶ **Training / Equipment for umpires is provided**
- ▶ **Be respectful of the umpires**

Stay Calm Your Umpires Try To Get it Right





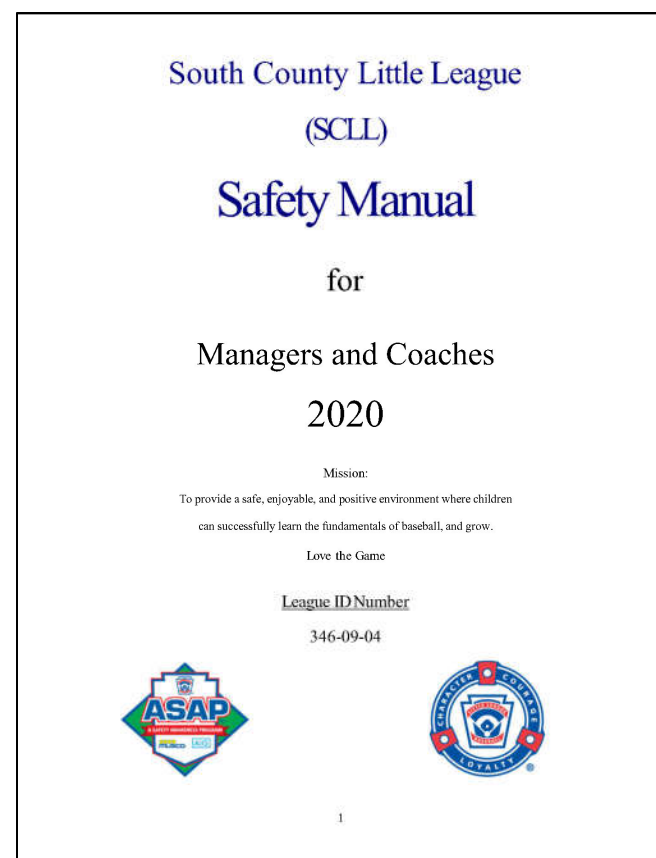
Content

- ▶ Welcome to 2020 Spring Season
- ▶ Organization
- ▶ Facilities and Fields
- ▶ Schedules
- ▶ Local Rules
- ▶ Health and Safety
- ▶ Upcoming Activities
- ▶ What You Need to Do
- ▶ Questions

Health & Safety



- ▶ ASAP Plan
- ▶ CDC Concussion Training
- ▶ First Aid Kits
- ▶ Parking Lot
- ▶ Lightning / Weather
- ▶ Player Equipment
- ▶ Catchers / Pitcher Warm-up





Content

- ▶ Welcome to 2020 Spring Season
- ▶ Organization
- ▶ Facilities and Fields
- ▶ Schedules
- ▶ Local Rules
- ▶ Health and Safety
- ▶ Upcoming Activities
- ▶ What You Need to Do
- ▶ Questions

Upcoming Events



Date	Time	SCLL Program	Event
1-Mar-20	3:30PM—5PM	Baseball	Baseball Managers Meeting—Pohick Library Meeting Room 1— 6450 Sydenstricker Road, Burke Virginia 22015
7-Mar-20	9AM—12PM	Baseball/Softball	Field Prep Day—Come assist SCLL prepare its facilities for the spring season—Lower Potomac
7-Mar-20	9AM—12PM	Baseball/Softball	Equipment Pickup—Managers and coaches may pickup team equipment—Lower Potomac
7-Mar-20	12PM—2PM	Baseball	Baseball Coaching Clinic—Led by SCHS Varsity Coach, Scott Nelson—South County High School
7-Mar-20	All Day	Baseball/Softball	SCLL ay at Dicks Sporting Goods—Springfield Store Only
8-Mar-20	9:30AM Arrival	Baseball	JUNIORS ASSESSMENTS. All Juniors Division Players are asked to participate in assessments—Lower Potomac LP3
	10AM-12PM		
8-Mar-20	1PM—2:30PM	Baseball	Team Parent Meeting—Pohick Library Meeting Room—6450 Sydenstricker Road, Burke Virginia 22015
8-Mar-20	1PM—5PM	Baseball	D9 Umpire Training—Teens and Adults—Colgan High School.
8-Mar-20	2PM	Baseball	Baseball Catchers Clinic - Lower Potomac
14-Mar-20 — 15-Mar-20	TBA	Baseball/Softball	FREE 2-Day UMPIRE CLINIC led by VA State Umpires Assoc. (VSTUA) (Adults only) - Fairfax Police Academy, Chantilly, VA
15-Mar-20	2PM	Baseball	Baseball Pitching Clinic - Lower Potomac
21-March-20	12AM	Baseball	Registration Closes for Juniors, and Seniors
21-Mar-20	9AM-12PM	Baseball/Softball	SCLL Umpire Training / Refresher—Lower Potomac
22-Mar-20	2PM	Baseball	Baseball Hitting Clinic - Lower Potomac
28-Mar-20	9AM—10AM	Baseball/Softball	OPENING DAY CEREMONIES—LOWER POTOMAC

Training Clinics March 8, 15, and 22



2020 SCLL

Baseball

CATCHING CLINIC

Led by Metro Baseball Academy

A, AA, AAA & Majors Players

MARCH 8 | 2-5 PM
SOUTH COUNTY LITTLE LEAGUE FIELDS

WWW.SIGNUPGENIUS.COM/GO/20F0B4AA4AC22AAF49-SCLL

FREE!!!

WWW.SCLLVA.ORG

Made with PosterMyWall.com

2020 SCLL

Baseball

PITCHING CLINIC

Led by Metro Baseball Academy

A, AA, AAA & Majors Players

MARCH 15 | 2-5 PM
SOUTH COUNTY LITTLE LEAGUE FIELDS

WWW.SIGNUPGENIUS.COM/GO/20F0B4AA4AC22AAF49-SCLL

FREE!!!

WWW.SCLLVA.ORG

Made with PosterMyWall.com

2020 SCLL

Baseball

HITTING CLINIC

Led by Metro Baseball Academy

A, AA, AAA & Majors Players

MARCH 22 | 2-5 PM
SOUTH COUNTY LITTLE LEAGUE FIELDS

WWW.SIGNUPGENIUS.COM/GO/20F0B4AA4AC22AAF49-SCLL

FREE!!!

WWW.SCLLVA.ORG

Made with PosterMyWall.com

Umpire Training

Two Unique Training Opportunities



D9 Umpire Clinic March 8, 2020

@COLGAN High School*



The clinic will run **1PM to ~4PM** on Sunday 8 March.
Clinic will be focused on proper positioning and mechanics.

Umpire uniforms are not required but wear comfortable clothes and sneakers. If you have a mask, please bring it with you. Please bring a hat that fits under a mask. We will have masks for those that don't have one.

For questions contact Mark Smith - smithma89@verizon.net
District 9 LL Chief Umpire

**ANYONE INTERESTED IN UMPIRING
IS WELCOME TO ATTEND
NO PRIOR EXPERIENCE IS REQUIRED**

Advance registration is requested!

Please sign up by March 1, 2020! by emailing smithma89@verizon.net

**Directions to Charles Colgan SR High School*
13833 Dumfries Road, Manassas, VA 20112

Park by the tennis courts on the right side of the school and enter through Door 28!



LL Umpire Clinic March 14-15, 2020

Fairfax County Police Academy (14601 Lee Rd, Chantilly)*

**Rules &
Regulations**



**Positioning &
Mechanics**

We have a group of highly experienced LL umpires that will conduct a **FREE** weekend umpire clinic for new and returning **ADULT** volunteer umpires.

The clinic will run **9:00 am to 5:00 pm** on Saturday, and **9:00 am to 1:00 pm** on Sunday. It will be a combination of classroom lessons and mechanics sessions so we can cover the basics in rules and mechanics.

Umpire uniforms are not required, but wear comfortable clothes and sneakers. If you have a mask please bring it with you. Please bring a hat that fits under a mask. We will have masks for those that don't have one.

For questions contact Mark Smith - smithma89@verizon.net
VA State Tournament Umpire Association - VP for Baseball

**ANY ADULT INTERESTED IN UMPIRING
IS WELCOME TO ATTEND
NO PRIOR EXPERIENCE IS REQUIRED**

Advance registration is required! Space is limited.

Please sign up by March 1, 2020! by emailing smithma89@verizon.net
Lunch will be provided on Saturday, so we need to know how many are coming!

**Directions to Fairfax County Police Academy:*
From I-66 go North on VA-28 N/Sully Rd for approx 2.5 miles to Willard Rd exit. At the top of the ramp take a left on Willard Rd. for about .3 mile. Take a right on Lee Rd - the facility will be on your right.

Opening Day March 28 – 9AM (1-hour event)



- ▶ Broadcast Emails will go out
- ▶ Arrive early – 8:30AM
- ▶ Carpool / Parking Tight
- ▶ Location – LP5
 - Line-up with Team Banner
 - T-Ball – stage inside LP4
- ▶ Agenda
 - Team Parade – Seniors down
 - High School High Fives
 - Presentation of Colors
 - National Anthem
 - Welcoming Remarks
 - Little League Pledge
 - First Pitches
 - Play Ball





Content

- ▶ Welcome to 2020 Spring Season
- ▶ Organization
- ▶ Facilities and Fields
- ▶ Schedules
- ▶ Local Rules
- ▶ Health and Safety
- ▶ Upcoming Activities
- ▶ What You Need to Do
- ▶ Questions

Key Things We Need You To Do

Go to Helpful Links on www.scllva.org



- ▶ Complete Background Check



- ▶ Identify Your Volunteers

- Assistant Coaches
- Team Parent
- Umpire (AA and Up)



- ▶ Pick up Equipment – March 7

- ▶ Collect Medical Release Forms from Players

Little League Baseball and Softball
MEDICAL RELEASE

Parent (or Guardian) Name: _____ Date of Birth: _____ Gender (M/F): _____
 Parent (or Guardian) Address: _____ City: _____ State/Country: _____
 Player's Address: _____ City: _____ State/Country: _____
 Home Phone: _____ Work Phone: _____ Mobile Phone: _____
 E-mail: _____
 Address: _____
 Hospital Information: _____
 Parent Insurance Co.: _____ City: _____ State/Country: _____
 League Insurance Co.: _____ Policy No.: _____ City: _____ State/Country: _____
 If parent/legal guardian cannot be reached in case of emergency, contact: _____
 Name: _____ Phone: _____
 Address: _____
 Date of last medical checkup: _____
 The presence of any other health problems or injuries that could prevent participation in this activity with or without release: _____
 M./Any/No _____
 Authorized Parent/Guardian Signature: _____ Date: _____
 FOR LEAGUE USE ONLY
 League Name: _____ League ID: _____
 Coach: _____
 Umpire: _____
 Date: _____

- ▶ Concussion Certification Training

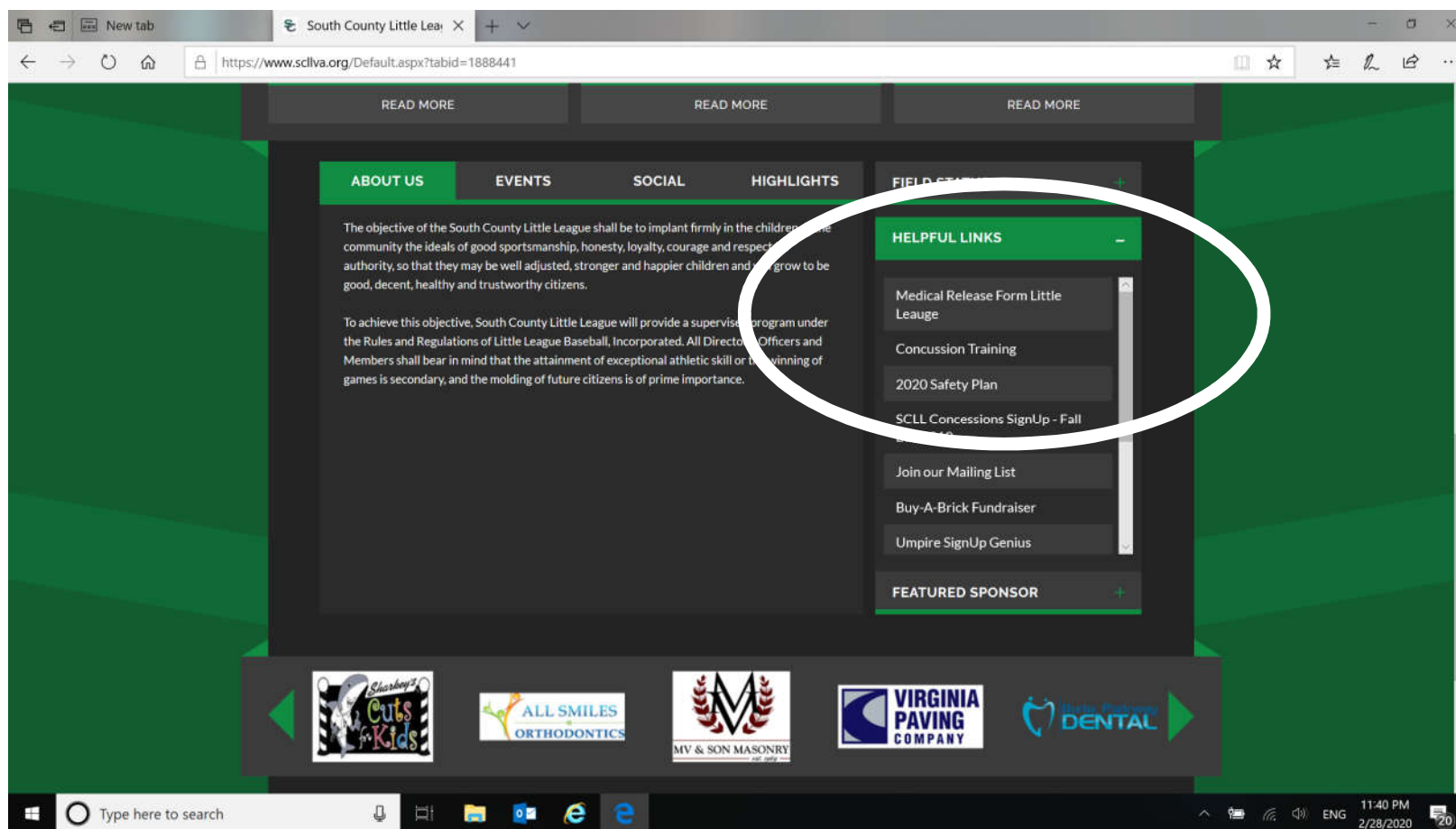
- ▶ Register Team on Team Manager



- ▶ Coordinate any Schedule Issues with Scheduler

The Helpful Links are on our Website

www.scllva.org





Content

- ▶ Welcome to 2020 Spring Season
- ▶ Organization
- ▶ Facilities and Fields
- ▶ Schedules
- ▶ Local Rules
- ▶ Health and Safety
- ▶ Upcoming Activities
- ▶ What You Need to Do
- ▶ Questions